



# Product Brochure — High Temperature Boiler Furnace Camera **TECH VENTURES PVT.LTD.**

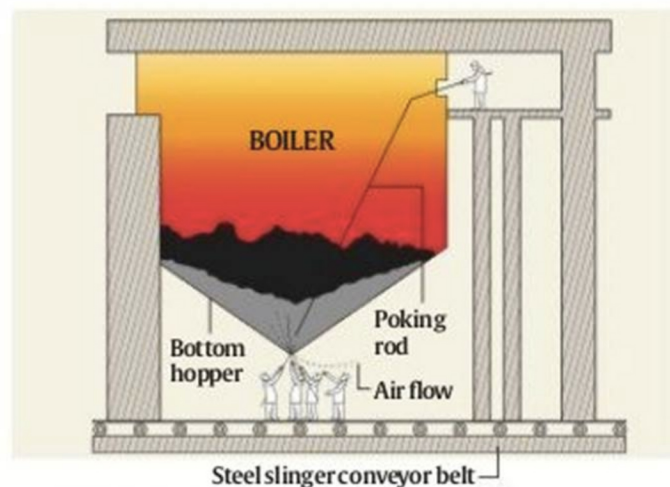
## Product Brief —

The solution is aimed to monitor live realtime inside the boiler and furnace at high temperature upto 2000 Deg. Cel.

## Area of attention —

Ash pile-up, clinker formation & boulder deposition, Ensuring a clean passage for pressure, flue gases and exhaust.

### DE-CHOKING BOILER, RISKING LIVES



**STEAM IS PRODUCED** in the boiler due to burning of coal. In the process, clinker formation happens and this falls down the funnel shaped boiler bottom through a 6-8 inch opening. A steel conveyor belt runs beneath.

## APPLICATIONS

- ▶ Critical vessel monitoring
- ▶ Preventive maintenance and hot spot detection
- ▶ Boiler tubes
- ▶ Furnace fuel feeds and nozzles
- ▶ Lime and cement kiln shells
- ▶ Molten metal handling equipment
- ▶ Glass furnaces
- ▶ Level detection

## FEATURES AND BENEFITS

- ▶ Ruggedized, weather proof, high temperature protection
- ▶ Non-contact temperature measurement
- ▶ Multiple on-screen temperature targets
- ▶ Multiple I/O options
- ▶ Selectable color thermograph palates
- ▶ Programmable alarms
- ▶ Analog and Digital Video Output
- ▶ Auxiliary software products available for expanded functionality, recording, reporting, etc.

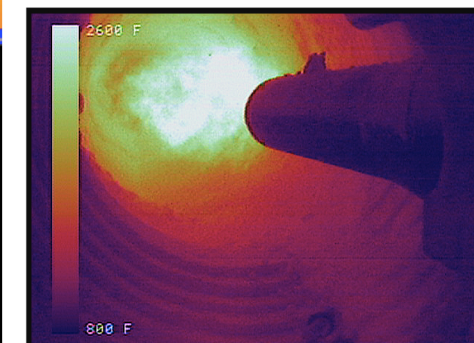
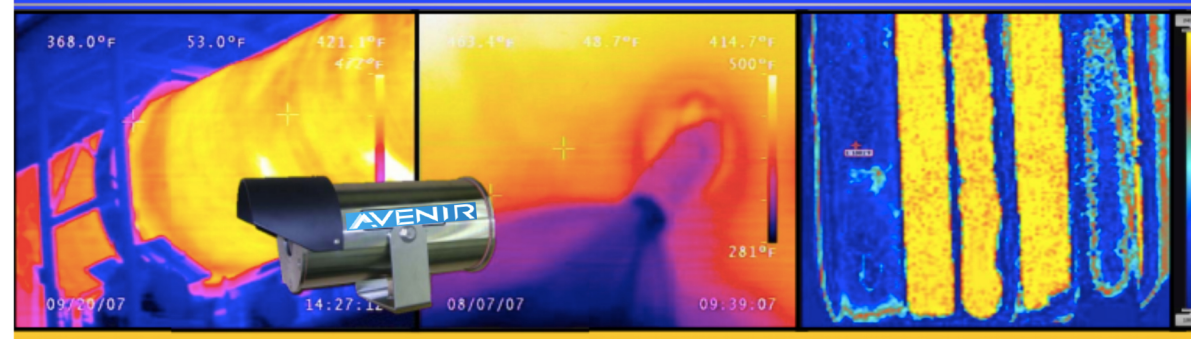
## Highlights of Solution

Inside Live View  
Temp upto 2000 Deg Cel.

Fireball Viewing  
Clinker formation  
Ash pile viewing

Real-time monitoring  
Automatic Alarm &  
Reporting

## INDUSTRIAL THERMAL IMAGING SYSTEM



Contact Us - India Corporate Off.

Email - [mktg@avenirgroup.in](mailto:mktg@avenirgroup.in) , Ph - 91 124 4294393  
904B, 9th Floor, Unitech Arcadia, Sector 49, Gurgaon (HR) India  
GPS - Lat 28.4185 , Long 77.0524